

## Enabling Actions

### Enabling Actions

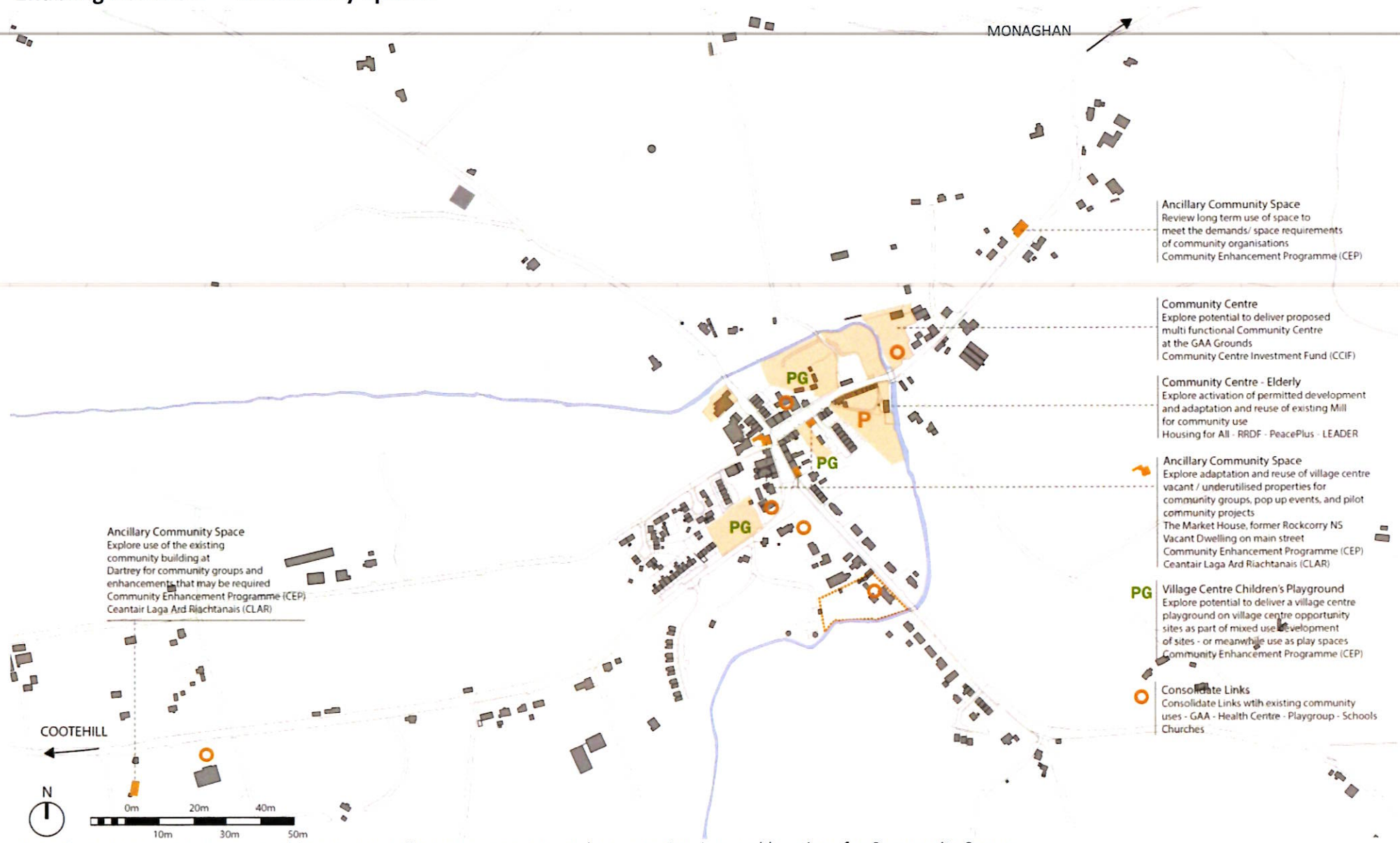
The overall Strategy and Actions can be subdivided under 4 Key Enabling Actions. The Enabling actions identify opportunity sites, and potential locations for projects that can be progressed. Concepts that may be considered under that action are illustrated and key partners, sources and funding. Projects progressed may be specific to an action theme, and may also cross cut with other themes bringing about a more holistic approach to the revitalisation of the village and as promoted under the scope of the project.

The four enabling actions are as follows:

- Enabling Action 1** Community Spaces
- Enabling Action 2** Village Centre Living
- Enabling Action 3** Public Realm and Active Streets
- Enabling Action 4** Loop walks, Active Travel and connection to West Monaghan Cycle Trail



## Enabling Actions 1 —Community Spaces



Overall Strategy and Actions—Enabling Action 1 illustrating concept, and opportunity sites and locations for Community Spaces

## Enabling Actions 1 —Community Spaces

### Community Centre

The vision for Community spaces are to ensure that space s provided meets the needs of multi generations. A key enabling action is to explore the delivery of a purpose built Community Centre to provide a modern flexible multi— space hub.

A purpose built community centre has the potential to provide a variety in spaces required, including a multi purpose hall, breakout spaces for informal gatherings, and smaller spaces for community group activities.

This building has the potential to consolidate the existing community uses in the village centre, and an opportunity to contribute to the built heritage of the village.

#### PARTNERS

Rockcorry Vision Plan  
Champion  
Community Groups /  
Sports / Youth Organisa-  
tions / Elderly Organisations  
Local Authority  
MCC

#### FUNDING:

Community Centre Invest-  
ment Fund CCIF  
Outdoor Recreation Infra-  
structure Scheme  
RRDF



*Brookfield Community and Youth Centre Dublin Hasset Ducatez Architects - Concept of potential community building with outdoor space, and multi functional internal space that can be adapted to meet user requirements*



*Donore Avenue Community Centre Dublin by architects Henchion & Reuter Architects providing a range of community spaces, with frontage onto the street, creating a welcoming and accessible space for the whole community.*

## Enabling Actions 1 —Community Spaces

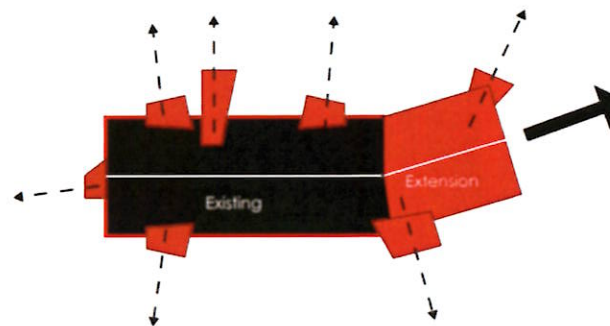
### Ancillary Community Spaces

The vision for the ancillary community spaces is to consider the adaptation and reuse of existing structures. This might include the existing St. Marys Hall on the Monaghan Road, the historic structure at the entrance to Dartrey Park, the former Rockcorry NS or the Market House. These structures have the potential to accommodate a variety of uses, and for various age groups, youths, middle aged, and elderly.

PARTNERS	FUNDING:
Property Owners	Community Enhancement Programme (CEP)
Community Groups / Sports / Youth Organisations / Elderly Organisations	CLAR
Local Authority	RRDF
	TVRS
	BAM



Adaptation of former convent and grounds as community café and garden at McCauley Place, Naas. Open to the public and part of homes for the elderly



Adaptation and extension of an existing structure, to develop a youth centre in Denmark by architects Cornelius + Vöge Architects renovated and extended an existing building, with flexible internal social spaces for all ages and variety of community organisations.

## Enabling Actions 1—Community Spaces

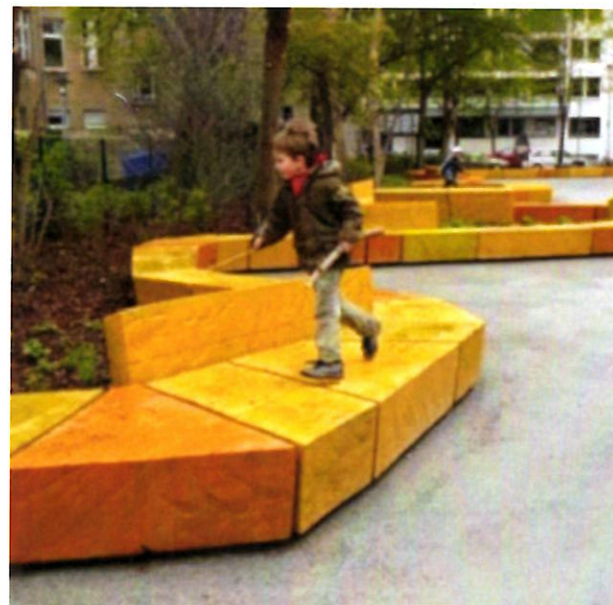
### Village Centre Children’s Playground

The vision for children's playground is to integrate greening and play strategies in proposed new residential areas in the village. Also to integrate play space as part of existing and new streets, allowing for parents and minders to meet and socialise. Public spaces encourage encounters and enable social and economic interaction enhancing community life. Greening strategies may also include community gardens and allotments.

PARTNERS	FUNDING:
Land owners Monaghan Co Co Tidy Towns	Community Enhancement Programme (CEP) Tidy Town Challenge RRDF Outdoor Recreation Infrastructure Scheme TVRS (Playground Funds)



*Integrate Play Spaces as part of existing and new residential areas, to enable free play. Consider potential for community gardens and allotments.*

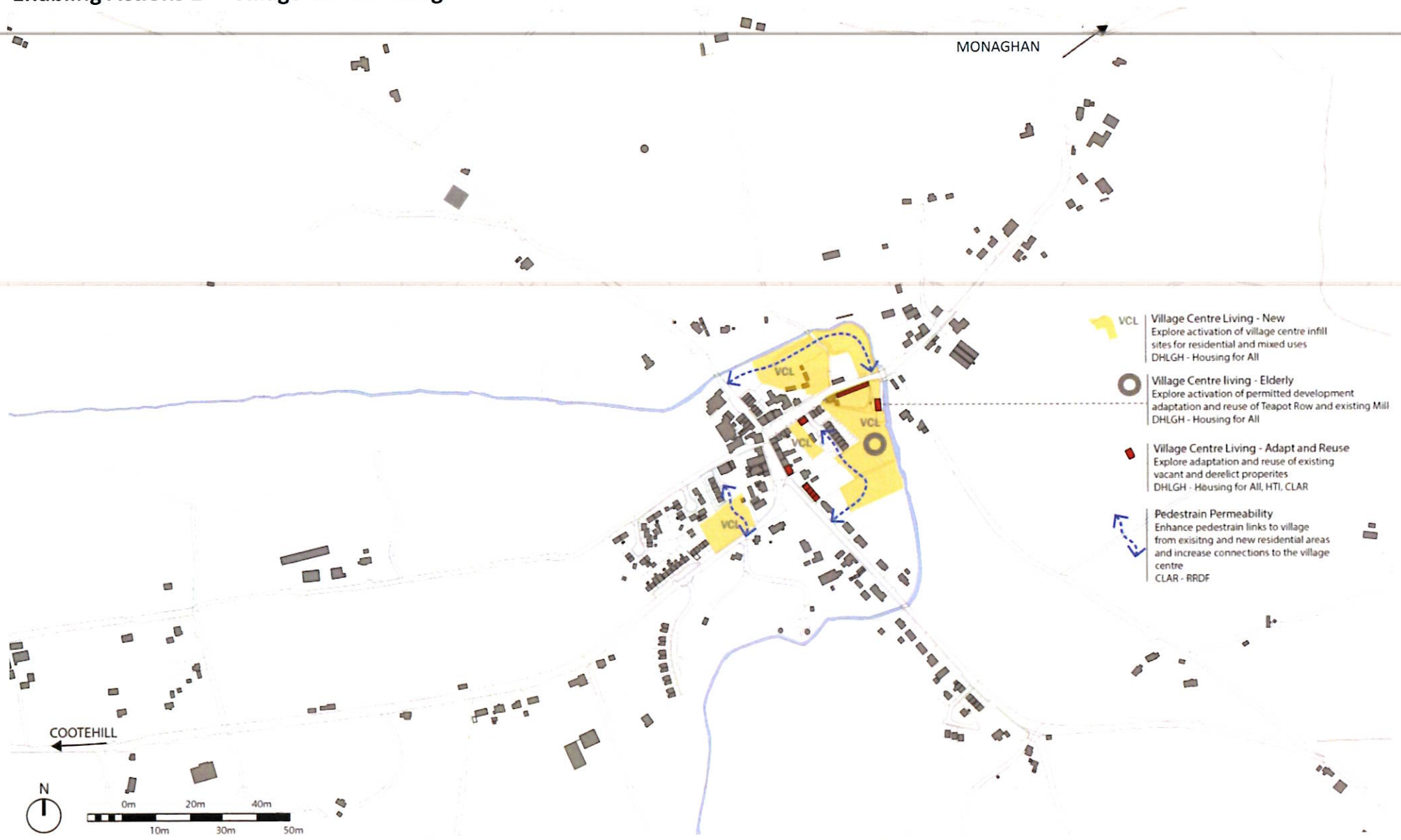


*Street furniture facilitating play and places to sit for all generations*



*Asna Square Clonakilty allowing for places to linger, and children to play while parents monitor, linger and chat. This supports the objective to activate streets under Action 3*

## Enabling Actions 2 —Village Centre Living



Overall Strategy and Actions—Enabling Action 2 illustrating concept, and opportunity sites and locations for Village Centre Living

## Enabling Actions 2—Village Centre Living

### Village Living—Adaptation and Reuse

The vision for Village Centre Living is to promote the adaptation and reuse of existing structures to create homes that meet contemporary needs and standards, while also providing homes that will benefit from the inherent character of an historic structure, and location in the heart of the village.

There is potential to use ground floor commercial units for residential purposes, subject to planning. Alternatively to bring these vacant uses back into commercial use with over the shop living. Village centre living will support existing and potential new services, economic activity and employment in the village.

#### PARTNERS / STAKEHOLDERS

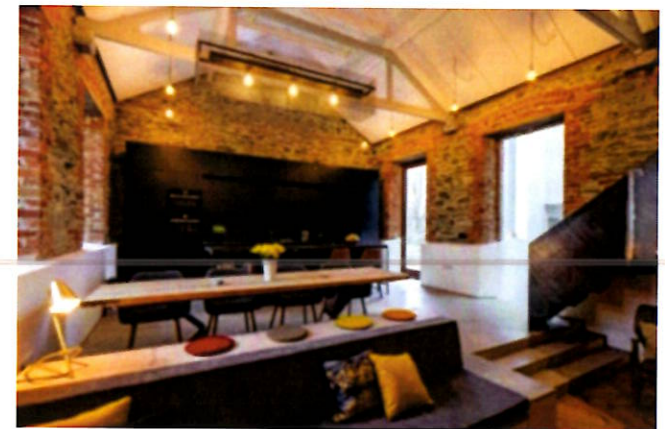
Land Owners  
Tidy Towns  
Monaghan County Council

#### FUNDING

Private Investment  
Housing for All  
Heritage Town Initiative  
Community enhancement Programme  
Town and Village Renewal Scheme



*Ramelton Co Donegal —Adaptation and Reuse of historic dwelling, reinstatement of shopfronts, and reinstatement of lime render by Dedalus Architects  
Illustration of before and after*



*Renovation, adaptation and extension of a 1890s National School in Killygarry, Cavan by Craft Studio Architecture*



*Pearse Street Dublin, Living over the shop Adaptation and Reuse of an 1840's house by Horan Rainford Architects*

## Enabling Actions—Village Centre Living

### Village Living—Infill homes for all

The vision for Village Centre Living is to promote new residential development in backland and infill locations in the heart of the village. There is potential to provide multi generational living to include homes for all. These can take the form of low rise medium density models to ensure a sustainable residential density is achieved. These should also integrate with the existing street network, and create inclusive and integrated streets in accordance with the Design Manual for Urban Roads and Streets (DMURS).

PARTNERS / STAKEHOLDERS	FUNDING
Land Owners	Private Investment
Monaghan County Council	Housing for All
Approved Housing Bodies	
Community Housing Groups	



*Housing for the Elderly, independent living associated with reuse and adaptation of historic structure, Gorey, Co. Wexford by Paul Keogh Architects*



*Low rise medium density residential development, creating courtyards to support community interaction and sense of place—Donnelly Turpin Architects 3rd Place RIAI Town Centre Living Competition Castleblayney*



*Abode by Procter Matthews, new residential areas with connecting pedestrian lanes*



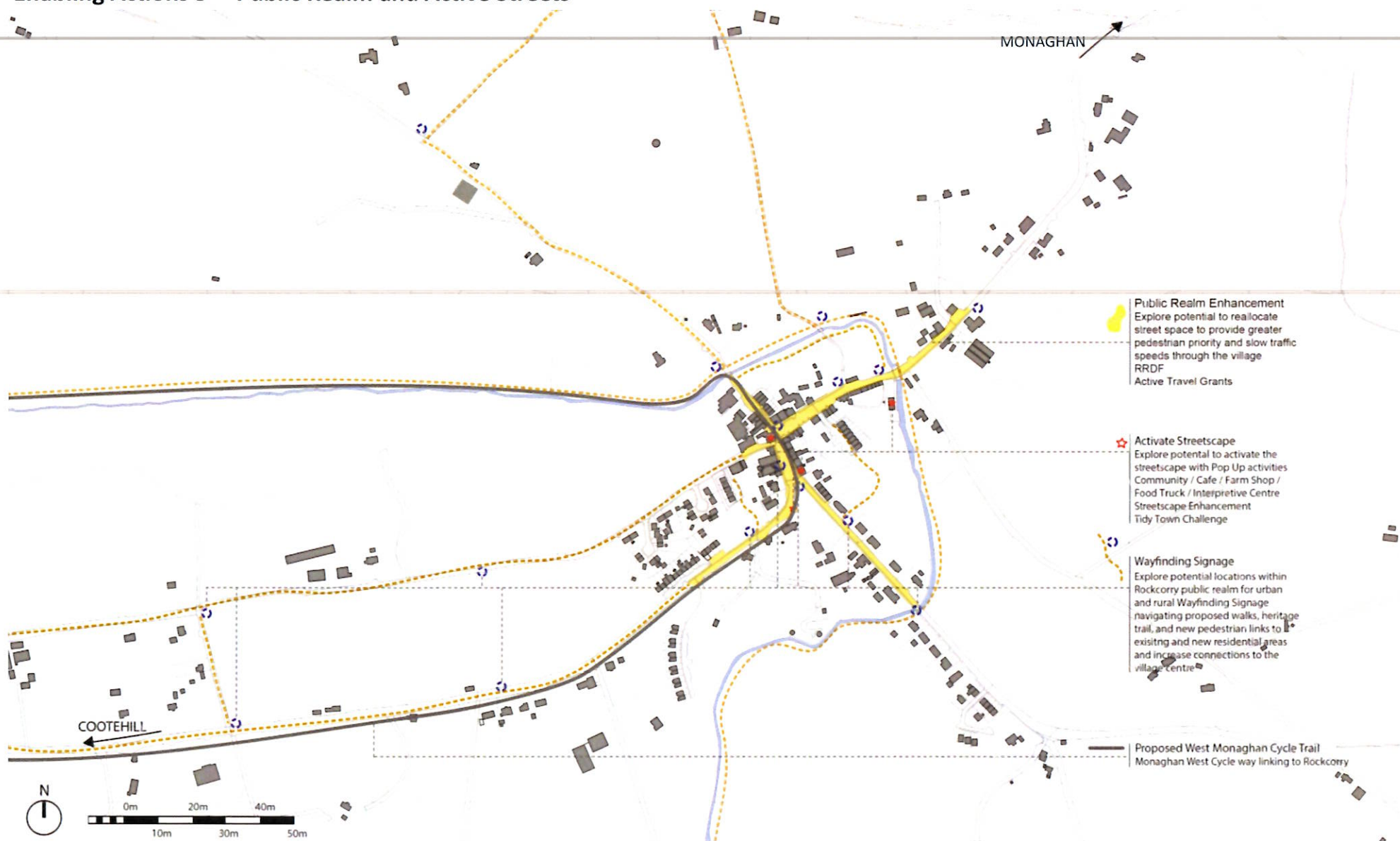
*Low Rise medium density homes, creating streets for living, Marmalade Lane, Mole Architects*

## Enabling Actions 4—Village Centre Living



Overall Strategy and Actions—Enabling Action 2 illustrating concept, and opportunity sites and locations for Village Centre Living—Also integrated with Enabling Action 4

### Enabling Actions 3 —Public Realm and Active Streets



Overall Strategy and Actions—Enabling Action 3 illustrating concept and opportunity sites and locations for Public Realm enhancement and Looped walks

### Enabling Actions 3—Public Realm and Streetscape



Existing Street View – Poorly presented streetscape / vacancy, expansive roadway and vehicular priority

### Exemplar



Park Lane Poynten—Street Cafe

Shop Front Enhancement

Pop Up Shop Farm Shop/Cafe

Public Realm Enhancement / Street Surface

Wayfinding And Promoting Active Travel



Reallocation of road space, promoting active travel, village centre as destination / pedestrian priority



Castlebar Public Realm—Pedestrian Priority

## Enabling Actions 3 —Public Realm and Streetscape

PARTNERS / STAKEHOLDERS	FUNDING
Land Owners	Private Investment
Tidy Towns	RRDF
Community Groups	Active Travel
Monaghan County Council	Streetscape Enhancement -
NTA	Shopfronts

*Existing Street View – Architectural Heritage, expansive roadway, vacancy*

### Existing



### Proposed



Reallocation of road space, promoting active travel, village centre / destination / pedestrian priority

### Exemplar



Castlebar Main Street

### Enabling Action 3—Public Realm and Active Streets

PARTNERS / STAKEHOLDERS	FUNDING
Land Owners	RRDF
Monaghan County Council	Active Travel
NTA	Streetscape Enhancement -
Tidy Towns	Shopfronts
Community Groups	Tidy Town Challenge
	IA Placemaking initiatives
	Private Investment



McCauley Place Naas Co. Kildare Community Cafe



Pop Up Markets—Killaloe Co. Clare



Rockcorry Reallocation of road space, promoting active travel, village centre / destination / pedestrian priority



Clonakilty Asna Square Co. Cork, reallocated road space, pedestrian priority and activated streets



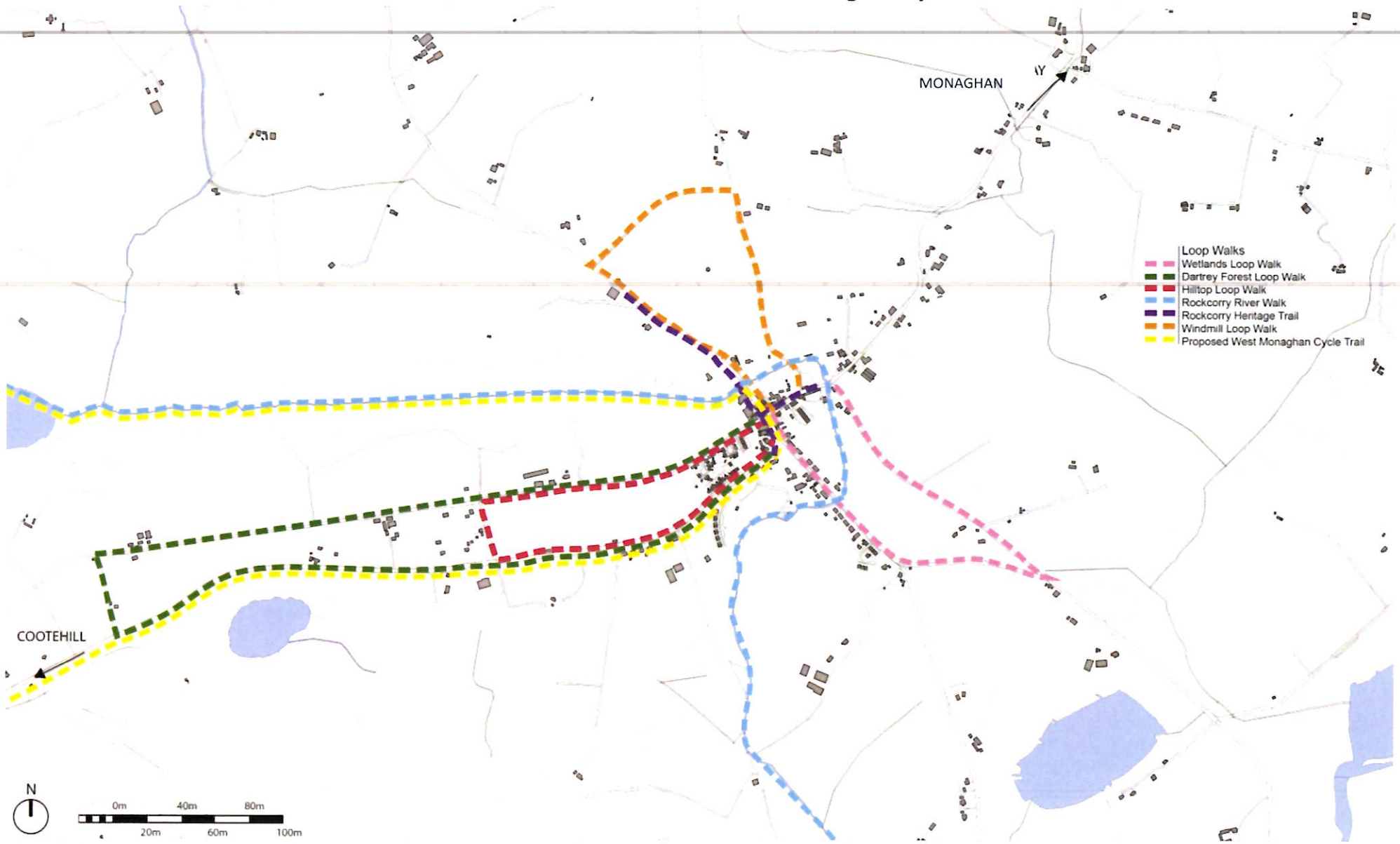
Farmers Shop / Community Shop

Enabling Actions 4—Looped Walks & Public Realm



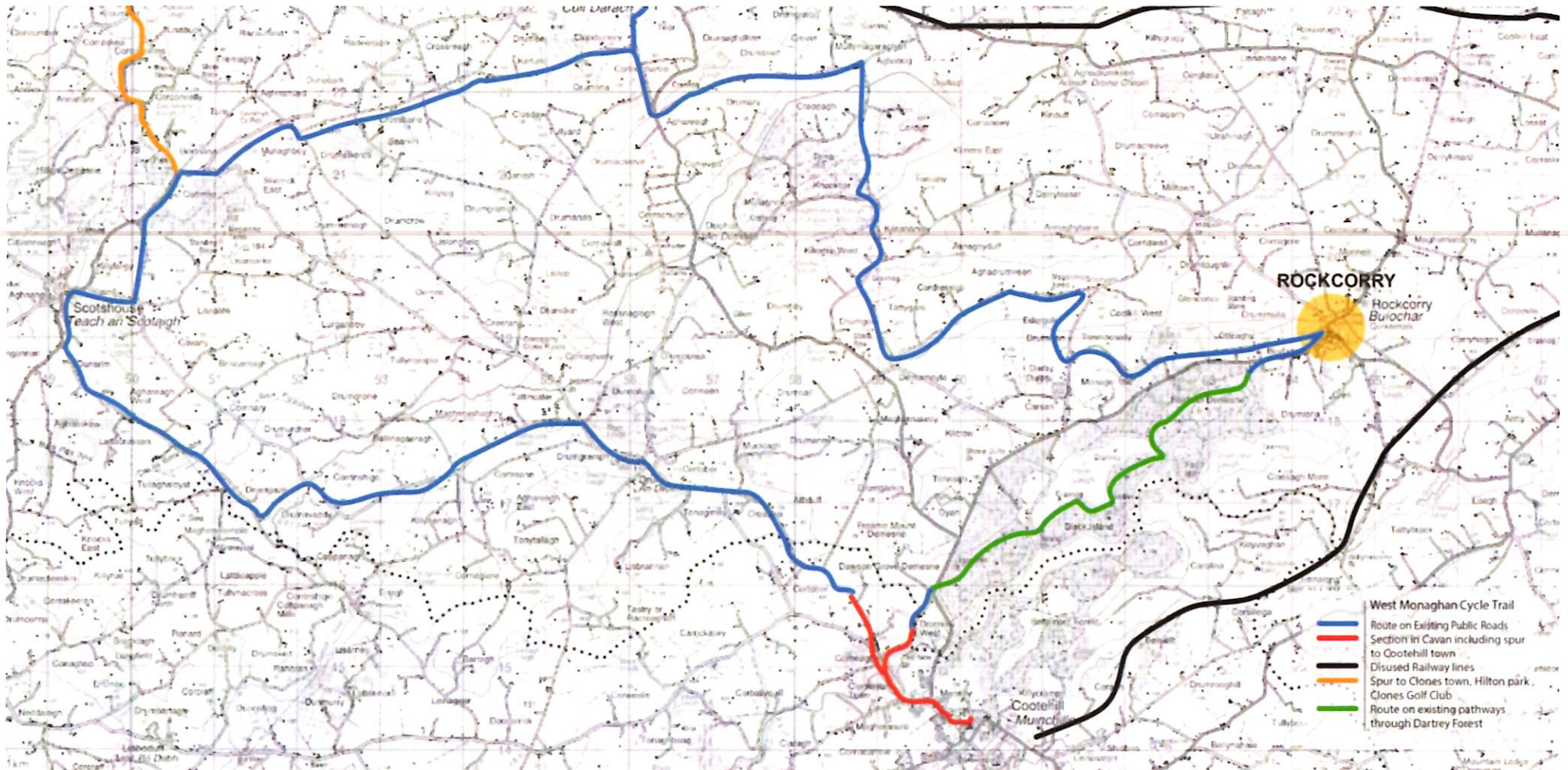
Overall Strategy and Actions—Enabling Action 3 illustrating concept and opportunity sites and locations for Public Realm enhancement and Looped walks

### Enabling Actions 4 —Loop Walks, Active Travel and Connection with West Monaghan Cycle Trail



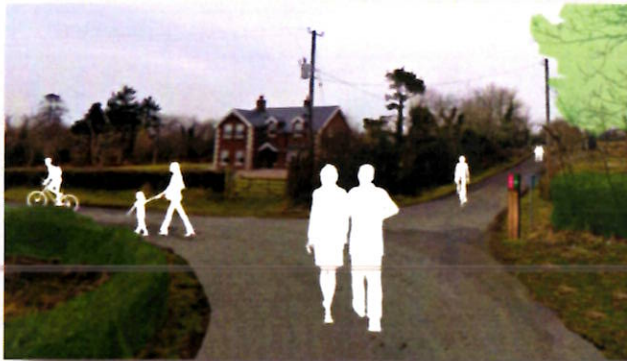
Overall Strategy and Actions—Enabling Action 4 illustrating concept and opportunity sites and locations of Looped Walks and opportunity to support active travel

### Enabling Actions 4 — Loop Walks, Active Travel and Connection with West Monaghan Cycle Trail



Overall Strategy and Actions—Enabling Action 4 illustrating concept and opportunity sites and locations of Looped Walks and opportunity to support active travel

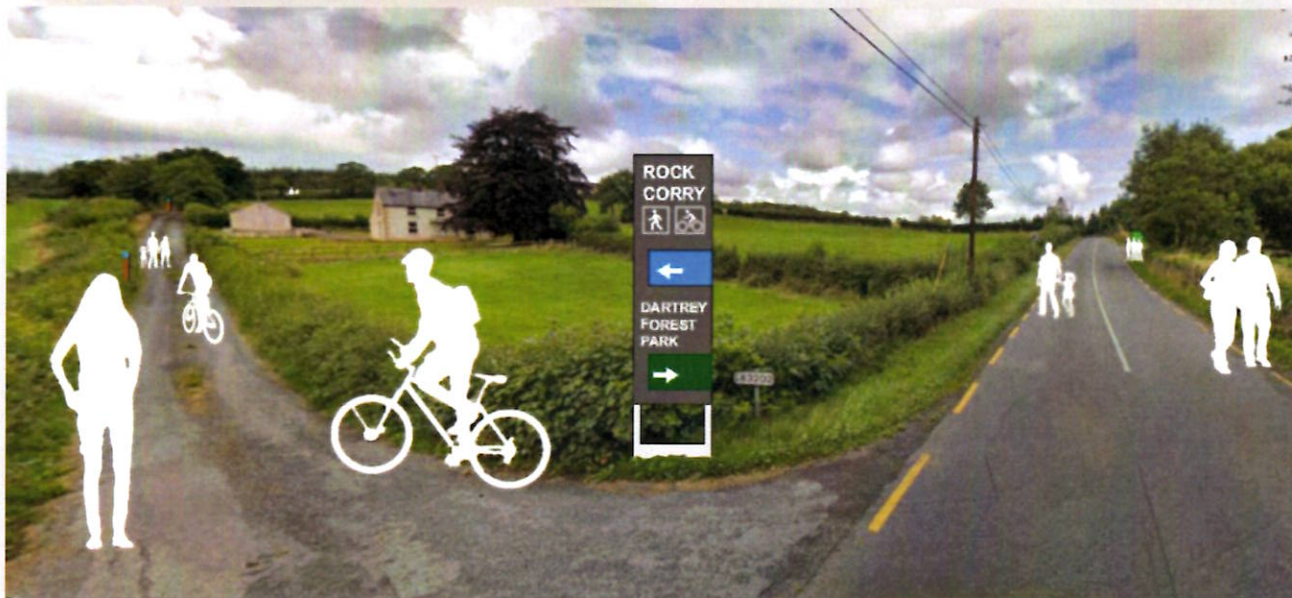
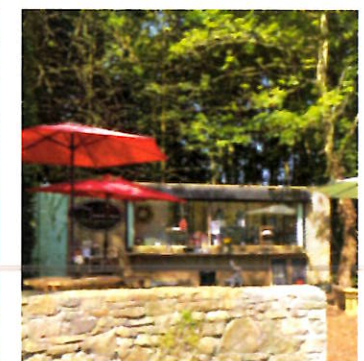
## Enabling Actions 4 — Loop Walks and Active Travel



Loop Walks



Pop Up Café Kiosk at events / routes / village green



Loop Walks

PARTNERS / STAKEHOLDERS	FUNDING
Land Owners	RRDF
Monaghan County Council	Active Travel
NTA	TVRS
Tidy Towns	LEADER
Community Groups	LIS
Irish Heart Foundation	CCAF
Culture Ireland (HTI)	ORIS

Signage and Way Finding

## Funding Opportunities 2023

Social Funding Opportunities	Acronym
Representative structures and community organisations within the area, affiliated to the Monaghan Public Participation Network, should agree to share principles for representation, accountability and collaboration. <a href="#">Public Participation Network Monaghan - PPN Monaghan</a>	PPN
The Core Steering Group should seek to formally adopt the UN Sustainable Development Goals, integrating these with all local project development and initiatives, mapping and promoting progress on implementation annually. <a href="#">Take Action for the Sustainable Development Goals - United Nations Sustainable Development</a>	UNSDG
Incrementally increase overall competition performance by establishing category goals and targets (Endeavour, Special, Litter Awareness, Young Persons, Sustainable Development, Climate Action, Circular Economy, Leave no Trace, Heritage, Water & Communities, Inclusion, etc) for the annual Tidy Towns competition. <a href="#">SV Tidy Towns Results Booklet 2021 - FINAL.indd</a>	Tidy Towns
Devise a programme of cultural, heritage, biodiversity and sustainability activities (in person or digital) for Heritage Week annually in August <a href="#">Organise an Event or Project   National Heritage Week 12 – 20 August 2023</a> and Culture Night. <a href="#">Home - Culture Night</a>	HC
Increase awareness and appreciation of the local built and natural environmental assets through participation in the Heritage Council initiatives to include the Heritage in Schools <a href="#">Heritage in Schools Scheme   The Heritage Council</a> , the Adopt A Monument <a href="#">Adopt a Monument   The Heritage Council</a> , Irish Pollinator <a href="#">Irish Pollinator Initiative   The Heritage Council</a> and Tidy Towns Heritage Awards Schemes <a href="#">Tidy Towns Heritage Award   The Heritage Council</a>	HC
Engage in the annual RIAI Tidy Town Challenge Special Award providing the winning Tidy Towns Committee with the expertise of a registered Architect for up to 5 days and to a value of €5,000. This competition is open to the Small Towns and Large Towns categories. <a href="#">6-2023-RIAI-Town-Challenge-Award-Entry-Form.docx (live.com)</a>	Tidy Town / RIAI
In tandem with Sport Ireland <a href="#">About Sport Ireland   Sport Ireland</a> and the Monaghan Sports Partnership <a href="#">Monaghan Sports Partnership   Sport and physical activity for all</a> develop a Community Sports and Physical Activity Hub (CSH) - a collective of progressive sports clubs and other local organisations that will work together to improve information, advice, support and access to and opportunities for sports and recreation to promote a healthier lifestyle for all. <a href="#">Community Sports Hubs   Sport Ireland</a>	MSP
<b>Economic</b>	
Develop, map and signpost Slí na Sláinte routes walking routes as a means of promoting active travel and healthy lifestyles for all ages and abilities. <a href="#">Irish Heart Walking Routes - Irish Heart</a>	SnS
Evaluate suitable ideas and opportunities through the Creative Communities Economic Action Fund in which creativity and cultural pursuits anchor a strategy for well-being, social cohesion and economic development. <a href="#">Creative Ireland (submit.com)</a> Creative Community Active Funding opportunities for Monaghan <a href="#">Monaghan - Creative Ireland Programme</a>	CCEAF
Leverage greater value from the public investment in Broadband Connection Points in Rockcorry by engaging with and delivering supports to each community around their specific needs via the Connected Communities Initiative. <a href="#">Homepage - Connected Communities (myconnectedcommunity.ie)</a>	CC